



Barracuda IM Firewall

All-in-one instant messaging solution for archiving, content filtering, and policy management

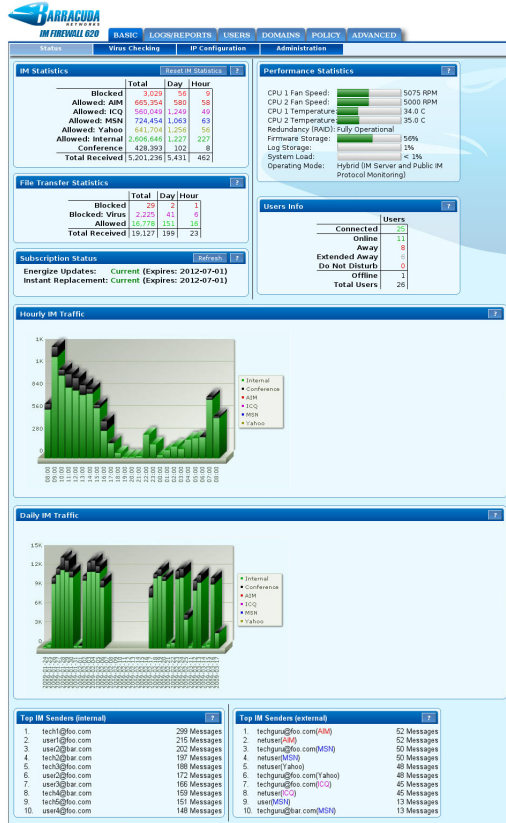
Designed for businesses of all sizes, the Barracuda IM Firewall is the first product to provide everything an organization needs to control and manage internal and external instant messaging (IM) traffic. The Barracuda IM Firewall has an integrated IM server and gateway that is customizable and can easily identify and manage both internal and public IM traffic within an organization. Using the Barracuda IM Firewall minimizes the virus and compliance risks of instant messaging, while logging all messages to an internal database with policy tools for content filtering and file transfer management.

Comprehensive Solution

Instant messaging products typically provide either an IM server for secure internal instant messaging within the organization, or an IM gateway to identify, log, and report on existing IM traffic. The Barracuda IM Firewall is a secure IM server with a feature rich IM management solution combined into a single appliance. This two-tiered approach provides organizations a complete and cost-effective IM solution.

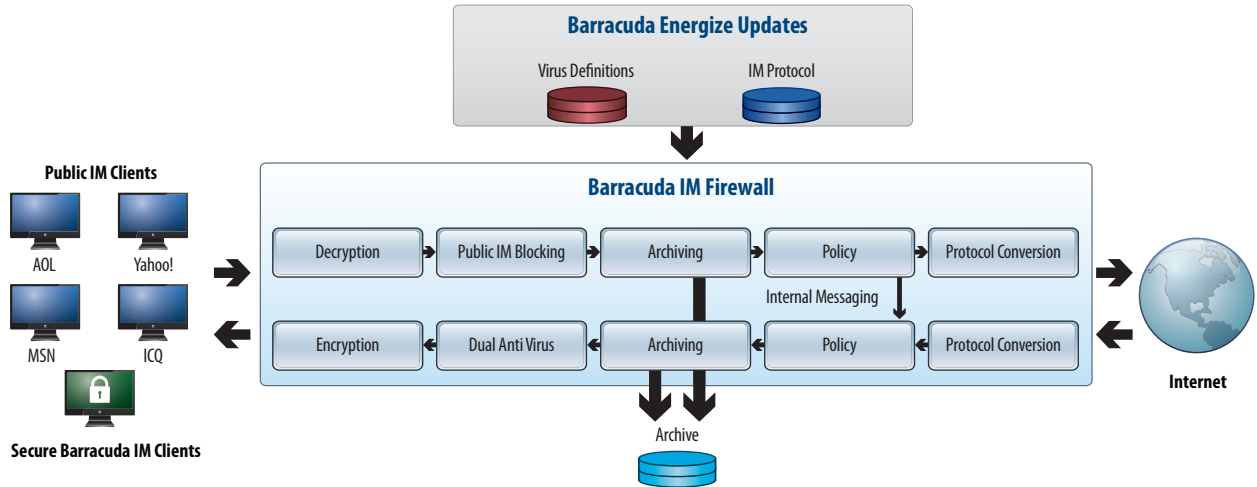
Low Maintenance

The Barracuda IM Firewall is easy to set up – taking only minutes to deploy. Once connected, all public IM traffic is captured and logged to an internal database. With an intuitive user interface for maintenance and monitoring, the Barracuda IM Firewall is a virtually administration-free solution. Energize Updates are delivered automatically by Barracuda Central to continuously provide the most effective methods to identify and control public IM traffic, while protecting networks against viruses and other threats.



The Barracuda IM Firewall displays the statistics on overall IM traffic, attempted violations, and blocked viruses.

Barracuda IM Firewall Architecture



MODEL
220
320
420
620
820



Internet

Typical Deployment



Barracuda IM Firewall



Clients Inside Network

TECHNICAL SPECIFICATIONS

Security Features

COMPREHENSIVE PROTECTION

- IM logging and archiving
- Virus filtering
- IM access controls
- File transfer management
- Keyword notification and content blocking
- Encrypted traffic using IM server/client
- Public IM blocking
- Screen name tracking
- Compliance
- Export IM Conversations to message archiving solutions

IM SERVER

- 256bit AES encryption
- Easy client rollout tools
- Contact list management
- Keyword notification
- Content filtering and blocking
- Public IM access using the Barracuda IM client
- LDAP and Active Directory integration
- Message disclaimers

VIRUS FILTER

- Dual-layer virus blocking
- Decompression of archives
- File type blocking

System Features

ADMINISTRATORS

- Web-based interface
- User account administration
- Reports, graphs and statistics
- LDAP interface
- Multiple domain support
- Secure remote administration
- IM client deployment tools

END USERS

- View personal IM logs
- Familiar IM client

Hardware Features

FRONT PANEL INDICATORS

- Standard VGA
- Activity indicator
- Power indicator

FRONT PANEL INDICATORS (cont.)

- Power button
- Reset button

CONNECTORS

- Standard VGA
- PS/2 keyboard/mouse
- Ethernet (see chart below)
- Serial port (DB-9)

POWER REQUIREMENTS

- AC input voltage 100-240 volts
- Frequency 50/60 Hz

Support Options

ENERGIZE UPDATES SUBSCRIPTION

- Standard technical support
- Hourly IM protocol updates
- Hourly virus definition updates

INSTANT REPLACEMENT SERVICE

- Replacement unit shipped next business day
- 24x7 technical support

BARRACUDA IM FIREWALL

MODEL
220
320
420
620
820

MODEL COMPARISON	MODEL 220	MODEL 320	MODEL 420	MODEL 620	MODEL 820
CAPACITY*					
Maximum Users	200	500	1,000	3,000	7,000
HARDWARE					
Rackmount Chassis	1U Mini	1U Mini	1U Mini	1U Fullsize	2U Fullsize
Dimensions (in.)	16.8 x 1.7 x 14	16.8 x 1.7 x 14	16.8 x 1.7 x 14	16.8 x 1.7 x 22.6	17.4 x 3.5 x 25.5
Dimensions (cm.)	42.7 x 4.3 x 35.6	42.7 x 4.3 x 35.6	42.7 x 4.3 x 35.6	42.7 x 4.3 x 57.4	44.2 x 8.9 x 64.8
Weight (lbs. / kg.)	12 / 5.4	12 / 5.4	12 / 5.4	26 / 11.8	46 / 20.9
Ethernet	1 x 10/100	1 x 10/100	1 x 10/100	2 x Gigabit	2 x Gigabit
Ethernet Passthrough**	1 x 10/100	1 x 10/100	1 x 10/100	1 x Gigabit	1 x Gigabit
AC Input Current (Amps)	1.0	1.2	1.4	1.8	3.5
Redundant Disk Array (RAID)				✓	Hot Swap
Redundant Power Supply					Hot Swap
ECC Memory				✓	✓
FEATURES					
Hardened and Secure OS	✓	✓	✓	✓	✓
Capture and Manage Public IM	✓	✓	✓	✓	✓
Internal Secure IM Server/Client	✓	✓	✓	✓	✓
Centralized Policy Management	✓	✓	✓	✓	✓
Keyword Notification	✓	✓	✓	✓	✓
Secure File Transfer	✓	✓	✓	✓	✓
Disclaimers	✓	✓	✓	✓	✓
User Identity Management	✓	✓	✓	✓	✓
Anti-Virus	✓	✓	✓	✓	✓
LDAP and Active Directory Support	✓	✓	✓	✓	✓
Per User and Group Access Control		✓	✓	✓	✓
Ethernet Bypass Hardware		✓	✓	✓	✓
Multiple Domains				✓	✓
Customizable Branding				✓	✓

US 11.0

Specifications subject to change without notice.

*Capacity depends on environment and selected options.

**Each Ethernet passthrough has two Ethernet jacks.